

Greetings from the President

ALA's Midwinter Conference was held January 20-24 in beautiful, warm, sunny Dallas, Texas and the programming was as bright and bold as the wide open sky! As your President, I represented you at Chapter Relations and was introduced at Council along with President-Elect Lisa Rice. I love attending any library conference, but I particularly enjoy the national conferences because they give me an opportunity to network with librarians from different parts of the country, hear national speakers, and learn about new products that could benefit our patrons, and perhaps make our jobs easier.

I attended some wonderful programs, but several stood out to me this year. Susan Cain, a lawyer and the author of *Quiet: the Power of Introverts in a World That Can't Stop Talking* (Crown, January 2012), gave a powerful presentation and one that really resonated with me. She spoke about how our soci-

ety values extroverts, how our workplaces are often built around the needs of the extrovert, and how we don't always appreciate the needs or the contributions of introverts. She maintains that both personality types have a lot to contribute and that both should be valued. As an introvert who has learned to function in a world of extroverts, I found her presentation to be very insightful.

John Green, author of the upcoming *The Fault in Our Stars* (Dutton/January 2012) and social networker extraordinaire, also presented at the Auditorium Speaker series. As an academic librarian, I was unfamiliar with John Green, but I am so happy that I attended his presentation. In addition to being very entertaining, he had some amazing tips for using social media to reach our patrons and to make us appear more relevant to those we serve. In the Young Adult world, John Green is evidently a rock

star, and after listening to him speak, I can certainly understand why.

I think the most fun event that I attended was the Youth Media Awards. This was my first YMA event, and even though I was warned, I certainly wasn't prepared. The lines stretched out the door, the buzz was electric, and cameras were flashing everywhere. If we had been in formal attire, I would have sworn that we were at the Oscars! If you haven't attended this event and you ever have the opportunity, I highly recommend that you attend. It is so much fun to see the excitement and enthusiasm of the librarians present, and being the first to hear the winners of the Newbery, Caldecott, Printz, and Coretta Scott King Book Awards as well as a host of others was quite a thrill.

As I was flying home on Tuesday, tired but happy, I opened the USA Today that was at my hotel door. Imagine my surprise and

Greetings from the President (continued)

delight, when the first article I read featured Susan Cain and her new book. I felt like a real insider since I had just heard her speak on this very topic. My delight continued when I spied the article on the Newbery and Caldecott Award winners. Again, I had the inside scoop since I was there when the awards were announced. On the final leg of the flight, I decided to read the latest

edition of *Entertainment*, and again I was thrilled to see a book review on John Green's new book. This was all the proof I needed to reinforce my belief that conferences not only inspire and enrich us as professionals, they also keep us current and relevant.

We have two local conferences coming up. KPLA's Spring Conference, "Shaping the Fu-

ture: Transforming Kentucky's Public Libraries," is April 11-13, 2012 in Bowling Green, Kentucky. The Joint Spring Conference, "Become the Library They Need: Understanding User Expectations," is April 11-13, 2012 at Lake Cumberland State Resort Park. After that, ALA at Anaheim, here I come! Hope to see you there!

Terry Buckner, President

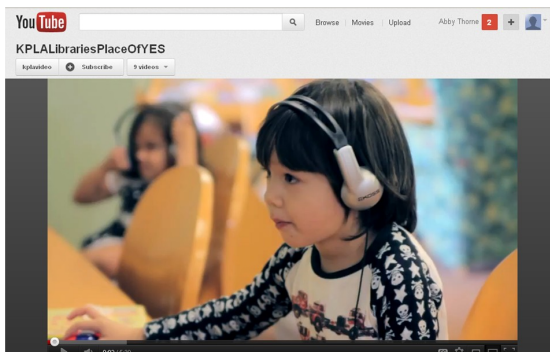
KPLA Offers Free Downloadable Advocacy Video

KPLA has made available a five-minute video that can be used by libraries across the Commonwealth to highlight their value. Since February is "Love Your Library" month, what better way to spread the message than by embedding its "Place of Yes" video on your library's web site, sharing it on your Facebook page, or downloading it to play at any event you choose?

Feel free to access the video in one of these two ways:

- YouTube link: <http://youtu.be/STzfeWmi92Y>
- Download it directly: http://dl.dropbox.com/u/58590451/KPLA_PSA/KPLA_PlaceOfYes.mov

Pass on the good word about libraries, and see how the message spreads!



Visit YouTube to check out KPLA's newest advocacy video and discover why each of Kentucky's public libraries is a "Place of Yes!"

Library and Museum Forge Partnership Agreement

A joint committee of representatives from the Boyd County Public Library and the Highlands Museum & Discovery Center has developed a partnership agreement that is mutually beneficial, while meeting the mission of the Library.

The agreement, which has not yet been finalized by both organizations, spells out ways the library and museum can partner and collaborate over the next five years.

Keeping in mind that each group is a “community anchor,” the agreement presents ways the two parties can benefit from the partnership to “deliver useful programming, meet the needs of the area, and provide a sense of community for years to come.”

The museum first approached BCPL last summer about a possible merger of operations. A committee comprised of museum and library officials was formed to study the issue. After months of research, the committee presented four options to each board in December. Both organizations ultimately felt that a partnership proposal submitted by the joint committee would serve the community better than a merger at this time. There are a few issues still to finalize.

Over the next five years, BCPL will purchase certain promotional and public relations services, space and programming help from the museum, as it does from commercial vendors, said Director Debbie Coper. For example, the library will use the museum’s Winchester Avenue display windows to promote library programs and services. BCPL will also rent space inside the museum for library displays and special events and programs that are too large for the main branch. The promotions and events budget will not increase as a result of the partnership.

The two groups plan to collaborate on many programs, including art exhibits, author visits, family history programs and teen events, Coper said. The library will purchase family museum memberships for check-out to library users. The museum will also hold “show your card days” that could include free admission for BCPL card holders, or discounts on memberships and gift shop purchases to library patrons.

The museum's 20-plus member board will be restructured to a seven-member governing board and a 13-member advisory board. One of the members of the governing board will be from the BCPL Board of Trus-

tees and one from the museum’s advisory board. The rest will be duly elected museum members.

“We have found creative, out-of-the-box ways to do what we can to help the museum while ensuring that we meet the library’s mission to provide quality resources and access to information for all users. This partnership will allow the library to provide some unique services and programming for library patrons. I am very excited to start work on this partnership,” remarked Coper.

“The Highlands Museum & Discovery Center is vital to economic development and quality of life in the Ashland/Boyd County area and beyond. We believe this innovative partnership will help strengthen the museum while allowing us to provide a richer suite of services to our patrons. Community assets like the museum require the support of many organizations. We hope that other groups will want to do the same,” said Mike Campbell, BCPL Board President. — *submitted by Amanda Gilmore, Boyd County Public Library*

Library Instruction Round Table to Hold Instruction Retreat

The KLA Library Instruction Round Table (LIRT) will host a one-day library instruction retreat at Transylvania University on June 8, 2012. The retreat will showcase innovative approaches to library instruction and

information literacy from around the state and provide an excellent opportunity for networking. Additional details will follow in February or early March. Check out [facebook.com/klalirt](https://www.facebook.com/klalirt) for updates.

Please contact Rob Detmering, LIRT Chair, at [502-852-8738](tel:502-852-8738) or robert.detmering@louisville.edu if you're interested in assisting with the retreat.

KLA Member News and Library Updates

Boone County Public Library —

Library Awarded \$100,000 Grant to Provide Financial Education Programs to Community



Boone County Public Library is pleased to announce that they have been awarded a \$100,000 Smart investing@your library® grant to provide financial education programs to the community.

Boone County Public Library was one of 16 public libraries, and the only one in Kentucky, selected for

the grant by the American Library Association (ALA) and the Financial Industry Regulatory Authority (FINRA) Investor Education Foundation as part of Smart investing@your library®. This prestigious grant will help Boone County Public Library to provide effective, unbiased financial and investor education to the community. The Library was invited to apply for this funding opportunity and was one of 80 libraries to submit proposals.

"This generous grant from the FINRA Investor Education Foundation couldn't have come at a better time," said Library Director Greta Southard. "Smart investing@your library® allows us to meet a critical need for people to have information they can trust

to help them arrive at a brighter financial future. We surveyed our community to discover which financial topics they wanted to learn more about and to find out how they preferred to receive the information. We used the results from the survey to tailor our financial program outlined in the grant proposal to our community's needs and interests. We wouldn't have been able to write this grant without community feedback. Thank you, Boone County! We look forward to using the grant to create innovative programs to help you prosper!"

With the funding, the library will partner with the Brighton Center to provide a year of financial learning experiences to families in

KLA Member News and Library Updates (continued)

Boone County. The initiative will be called “Earn, Spend, Save” and include collaborations with the State of Kentucky Department of Financial Institutions and Boone County Schools. Targeted programs and print resources will be implemented for all age groups, from preschoolers to senior citizens.

“Our plan is to offer programs for all ages on the same nights at the same times,” said Carrie Herrmann, the library’s project coordinator for the grant. “Families will be able to participate without having to look for childcare. We want to make it easy for everyone in Boone County to participate and benefit from this grant.” The “Earn, Spend, Save” Program will launch in August.

Smart investing@your library® is a partnership between the Reference and User Services Association (RUSA), a division of the American Library Association, and the FINRA Investor Education Foundation. The program supports public libraries across the country in their efforts to meet financial education needs at the local level.

The Reference and User Services Association is the foremost organization of reference and information professionals who make the connections between people and the information sources, services and collection materials they need.

FINRA, the Financial Industry Regulatory Authority, is the largest independent regulator for all securities firms doing business in the United States. FINRA is dedicated to inves-

tor protection and market integrity through effective and efficient regulation and complementary compliance and technology-based services. FINRA touches virtually every aspect of the securities business—from registering and educating all industry participants to examining securities firms, writing rules, enforcing those rules and the federal securities laws, informing and educating the investing public, providing trade reporting and other industry utilities, and administering the largest dispute resolution forum for investors and firms. For more information, visit www.finra.org.

The FINRA Investor Education Foundation supports innovative research and educational projects that give underserved Americans the knowledge, skills, and tools necessary for financial success throughout life. For details about grant programs and other FINRA Foundation initiatives, visit www.finrafoundation.org.

Boone County Public Library Receives State’s Highest Library Award

Boone County Public Library has been awarded an Exemplary Certificate by the Kentucky Public Library Association Standards Committee for participation in the 2011 round of the 2011-2012 Kentucky Public Library Standards.

Kentucky’s public library systems were rated in seven categories: management, human resources, facilities, services, technology, public relations, and collections. Boone

County Public Library is one of three Kentucky public libraries to ever receive the Exemplary Level of the KPLA Standards. The other two are Kenton County Public Library and McCracken County Public Library. The Exemplary Level is the highest ranking a Kentucky public library system can receive.

“We always strive to be the best we can be,” said Library Director Greta Southard. “It’s nice to have our efforts validated by the Kentucky Public Library Association. We’ve constantly been at the forefront of providing new programs and services to our community while maximizing our resources. We spend dollars on new materials and services that are not only being used by our community but are useful to our customers.”

The library offers an expansive range of new services. One of these is Freegal, a database of free and legal downloadable music. Cardholders can download three free songs a week with the Library’s subscription and they get to keep the songs. In December alone, 793 customers downloaded 4,562 songs from Freegal.

“We felt we could better serve our customers by spending the money on this subscription where they can choose the songs they want instead of on CDs that get damaged and lost and have a short shelf-life,” said Southard.

“We also look for ways to work smarter by collaborating with local agencies and libraries. We work

KLA Member News and Library Updates (continued)

closely with Success by Six Boone County and the Boone County Community Early Childhood Council to help children in our community be ready to read when they start school.”

For the past eight years, Boone County Public Library has been the venue for the Early Childhood Fair which provides developmental screenings and information for families with preschoolers. The library’s Early Literacy Team has set the model for other libraries across the state and members of this team are in high demand as trainers for similar programs throughout Kentucky

“We know that when we combine our resources with our partners we can achieve much more than we could alone,” said Southard.

Some partnerships initiated by Boone County Public Library are: Kentucky Libraries Unbound, a collaborative where partners pool resources to purchase digital books, movies, music and audiobooks; askwhyky.com, an online question and answer service; Northern Kentucky One Book One Community, a community-wide reading program; and Show Us Your Card, an initiative that offers discounts for cardholders at local busi-

nesses. — *submitted by Becky Kempf, Boone County Public Library*

Eastern Kentucky University —

EKU Justice & Safety Library Reopens



Group work stations in the renovated Justice & Safety Library

Eastern Kentucky University welcomed another great space to campus when the newly renovated Justice & Safety Library reopened on January 9. Part of the larger Stratton Building renovation, the nearly half-million dollar project was generously provided by EKU’s College of Justice & Safety.

Visitors enjoy 18 brand-new desktop computers, 9 of them touch-screen, complete with additional electrical outlets for simultaneously charging phones or other devices. Generous group work spaces welcome collaborative projects; the library renovation includes restaurant-style

booths, group stations with large monitors and several laptop connections, and a group study room.

The library also features a relevant and succinct collection of the most popular Justice & Safety titles. Collaboration between EKU Libraries and IT also help make the space unique; representatives are available in the space during library hours to meet all technology and library needs.

Visit <http://library.eku.edu/justiceandsafety> to learn more.

Friends of EKU Libraries Host Evening with Kim Edwards

Award-winning author Kim Edwards, whose latest book, *The Lake of Dreams*, has received rave reviews, was the featured speaker at the annual Friends of the Eastern Kentucky University Libraries dinner on Friday, November 18. Guests gathered in the Grand Reading Room of the John Grant Crabbe Main Library to enjoy dinner and a presentation by Edwards, who grew up in the Finger Lakes region of New York and

KLA Member News and Library Updates (continued)

most recently taught at the University of Kentucky. She is also the author of *The Secrets of a Fire King*, which was a finalist for the PEN/Hemingway Award, and *The Memory Keeper's Daughter*, which was a Barnes & Noble Discover Award pick and spent 122 weeks on the *New York Times* Best Seller List, 20 of those weeks at the top. The latter also won the Kentucky Literary Award and the British Book Award, and was chosen as Book of the Year for 2006 by *USA Today*. The dinner and presentation were followed by a dessert reception, including harp music by Elaine Cook, in the Noel Studio for Academic Creativity.

Noel Studio for Academic Creativity to Offer Minor

The Noel Studio will offer a new minor in Applied Creative Thinking beginning in fall 2012. For more information, please visit: <http://studio.eku.edu/minor-applied-creative-thinking>.

EKU Staff News

Emily Aldridge, former Library School Associate, was named Visiting Reference and Instruction Librarian for EKU Libraries' Reference and Instruction Team in 2012. Her new responsibilities include reference service (electronic and face-to-face) and library instruction.

Heather Beirne, former Library Associate III, was named Education Librarian in EKU Libraries' Learning Resources Center in December

2011. Beirne's new responsibilities include reference service (electronic and face-to-face), library instruction, collection development, and liaison work with the College of Education.

Tessa Ritter joined EKU Libraries' Circulation Department in fall 2011. Ritter graduated from Berea College with a B.A. in Theatre. Her resume includes Office Manager at a non-profit counseling agency and Administrative Assistant for an engineering firm. Her responsibilities include working with the Library Express service.

EKU Publications, Presentations, and Awards

Dr. Shawn Apostel, Noel Studio Communication Coordinator, and **Dr. Russell Carpenter**, Director of the Noel Studio, presented "New Media Voices in the Communication Center: Engaging Voice and Multimodality in ePortfolios," at the National Communication Association Annual Convention in New Orleans in November 2011. They received the Top Panel Award in Communication Centers section.

Stefanie Brooks, **Pat New**, and **Ashley Wray** will be presenting about EKU Libraries' expanded Library Express service at the Illiad International Conference in Virginia in March.

Dr. Russell Carpenter, Director of the Noel Studio, presented "Integration and the Campus Com-

munity: Theories, Concepts, and Applications," at the National Conference on Peer Tutoring in Writing in Miami, Florida in November 2011.

Dr. Russell Carpenter presented "Industry-University Partnerships: Exploring Concepts and Practices through Emerging Technologies," at the Council for Programs in Technical and Scientific Communication in Harrisonburg, Virginia in October 2011.

Karen Gilbert, EKU Librarian, and **Dr. Michelyn Bhandari**, Associate Professor in EKU's Department of Health Promotion and Administration, were published in the December 2011 issue of *College & Research Libraries News*. The article is entitled, "Cultural Competency in Health Care: Websites for Health Care Providers and Educators," and can be found by visiting <http://crln.acrl.org/content/72/11/648.full.pdf+html>.

A pre-order form is available for the new *Introduction to Applied Creative Thinking* text, forthcoming from New Forums Press: <http://www.scribd.com/doc/76672808/IACT-Pre-Order-Form>. The book is co-authored by EKU's **Drs. Hal Blythe**, **Charlie Sweet**, and **Russell Carpenter**. — submitted by *Krista Rhodus*, EKU Libraries

University of Louisville

Kornhauser Health Sciences Library to Host

KLA Member News and Library Updates (continued)

Frankenstein Traveling Exhibit

Kornhauser Health Sciences Library will be hosting *Frankenstein: Penetrating the Secrets of Nature*, a traveling exhibit developed by the National Library of Medicine (NLM) in collaboration with the American Library Association. This exhibit explores Mary Shelley's world that gave birth to *Frankenstein*. It considers how Mary Shelley's unfortunate creature frequently provides a framework for discussions of contemporary biomedical advances which challenge our traditional understanding of what it means to be human. There will be an opening reception on Friday, February 17, 3:00 pm–5:00 pm with a program at 3:30 pm. Four lectures on various topics relating to Frankenstein will be presented on Fridays from noon to 1:00 pm and a series of films will be shown at various times on Wednesdays. NLM has also created a series of lesson plans for teachers who may wish to use the exhibit for instruction. For a complete schedule of events, lesson plans, more information about the exhibit, and information about the novel and the author go to: <http://louisville.libguides.com/>

[Frankenstein](#) or contact Carol Brinkman as (502)-852-1008. — submitted by Carol Brinkman, University of Louisville

Western Kentucky University —

Recent Accomplishments and Activities at WKU Libraries

- WKU Librarians Jack **Montgomery** and **Rosemary Meszaros** attained the rank of professor at the beginning of the 2011-12 academic year.
- A poem written by Library Public Services Associate Professor **Sean Kinder** recently was selected for inclusion in the 2012 *Anthology of Appalachian Writers, Ron Rash Volume*—the fourth volume in the anthology series. This anthology is supported by The Shepherd University Foundation and The West Virginia Center for the Book.
- Three Western Kentucky University students were recently awarded the WKU Libraries and University Experience Undergraduate Research Award for the Fall 2011 Semester. The students were recognized in a special ceremony at Cravens Library on WKU's campus with family friends, committee members and instructors present. Each recipient received a plaque and \$100 cash prize for his/her achievement.
- Library Technical Services Professor **Jack Montgomery** presented a program on his book *American Shamans: Journeys with Traditional Healers* last October. Montgomery and his wife authored a *Wandering the Web* column entitled "Ghost Hunting: a Passion for the Paranormal" that was published in the September 2011 issue of *Against the Grain*. Montgomery has also collaborated with librarians and loaned artifacts from his collection of folk religious objects to support an exhibition on author Zora Neale Hurston and her novel *Their Eyes Were Watching God* to be presented at the Roger Williams University Library in Bristol, RI in February 2012.
- **Brent Fisk**, Senior Circulation Assistant in the Visual and Perform-

KLA Member News and Library Updates (continued)

ing Arts Library, wrote three poems that were highlighted in the latest issue of the *Louisville Review*.

- **Suelyn Lathrop**, WKU Library Special Collections Assistant Professor, assisted with new and improved exhibits that are now online. Go to http://digitalcommons.wku.edu/kmlsc_exhibits/.
- **Uma Doraiswamy**, WKU Library Technical Services Assistant Professor, wrote "The Information Search" that was published in the journal *Community and Junior Colleges*.
- **Amy Slowik**, WKU Library Public Services Assistant Professor, partnered in writing an article coming out in the next issue of *College & Research Libraries* called "The Value of Research in Academic Libraries."
— submitted by Jennifer Wilson, *Western Kentucky University Libraries*

News from KLA Members

New Book by Constance Ard Now Available

Constance Ard, owner of Answer M a v e n (<http://answermavensolutions.com>) is happy to announce the availability of her latest publication. *Adding Value to Corporate Libraries and Information Services* is published by the Ark Group and is available for purchase at: <http://bit.ly/zgbnSP> .

The report offers some great insights into the life of the 21st Century Information Professional. Packed with best-practice tools, guidance and insights from your peers and industry experts, this invaluable handbook provides effective solutions that can be implemented immediately to add value and improve services within your organisation.

The report focuses on corporate and other special libraries and covers a variety of topics from the skills needed to navigate today's knowledge economy to the emerging trends in eBooks and outsourcing.
— submitted by Constance Ard, *Answer Maven Solutions*

Recent Publications by Africa Hands

Africa Hands recently published "Wandering the Web: What's in Your Toolbox? Online Resources Keeping LIS Professionals Informed" in the November 2011 issue of *Against the Grain: Linking Publishers, Vendors and Librarians* professional magazine. Africa also published "Where the Jobs Are: Listings and Resources for LIS Professionals" in the December 2011 issue of *FUMSI Magazine*. The *FUMSI* article is available online at <http://web.fumsi.com/go/article/find/65124>. — submitted by Africa Hands, *Librarian*



Kentucky Library Association

1501 Twilight Trail
Frankfort, KY 40601

Phone: 502-223-5322
Fax: 502-223-4937
<http://klaonline.org/>

**Kentucky Libraries: For Every Chapter
of Your Life**

BENEFITS OF MEMBERSHIP:

- Updating skills and exchanging information.
- Adding your voice to the collective voice of librarianship (particularly in legislative concerns).
- Meeting others working in your type of library setting to share common problems and solutions.
- Receiving association publications such as *Kentucky Libraries* and *IN-FO-CUS*.
- Opportunities to receive grants and scholarships.
- Contributing sessions or papers at meetings.
- Receiving CEUs.
- Contributing to the profession on a professional level.
- Receiving discounts on annual and other meetings.
- Networking with your peers.

2012 KLA/KSMA Joint Conference “Kentucky Libraries: For Every Chapter of Your Life” September 20-22, 2012

